

2017 Annual Report



women aware

MOVING BEYOND ABUSE

A Message From Our Executive Director



Our mission is to promote the safety and self-sufficiency of individuals and families affected by domestic violence in Middlesex County, New Jersey.

"True heroism is remarkably sober, very undramatic. It is not the urge to surpass all others at whatever cost, but the urge to serve others at whatever cost." -Arthur Ashe

*In 2017, we have proudly served 1 out of every 8 survivors of domestic violence in New Jersey by providing over 9,000 nights of safe refuge, sheltering 1 out of every 3 mobility-impaired survivors in the state, answering 4,800 hotline calls, obtaining over 600 orders of protection, assisting 20% of children's counseling in N.J., and delivering **over 5 times more services to survivors compared to the state average.***

Additionally, Women Aware is well positioned to press into our purpose. Over the last ten years, we have demonstrated a strong methodical upward trend indicative of strategic financial management and a commitment to stability during turbulent economic times in the non-profit sector. The agency budget has grown by 300% in the past decade as we continue to move victims beyond abuse.

**"I was not alone. I saw that I wasn't the only one going through this day in and day out. It gave me the strength to leave."
- Support Group Member**

Dreams really do come true.

**Phyllis Adams, MSW, MA, DVS
Executive Director**

**"This is the first year I didn't have to tell my kids Santa couldn't find our home."
- Mother receiving free toys from our annual Holiday Gift Shop**



women aware
MOVING BEYOND ABUSE

2017: A LOOK BACK



women aware
MOVING BEYOND ABUSE

Your support helps survivors *move beyond abuse.*

Women Aware provided comprehensive services to 1 in every 8 survivors of domestic violence in New Jersey.

A total of 1,900 survivors of domestic violence, including 325 children, found safety and support at Women Aware.



We provided over 9,000 nights of refuge to women and children fleeing violence in our confidential Safe House.

Thanks to our ADA-compliant shelter, we served 1 out of every 3 mobility-impaired survivors seeking services in New Jersey.

Women Aware held over 1,150 immigration sessions for survivors.



2017: A LOOK BACK



women aware
MOVING BEYOND ABUSE

Your support helps survivors *move beyond abuse*.



We delivered over 5 times more services to sheltered survivors than the state average.

Over 30% of case management sessions were provided in a language other than English.

We answered over 4,800 hotline calls, providing support and resources to individuals in crisis.



Our legal advocates assisted survivors to obtain over 600 legal protection orders to ensure their safety.



We provided nearly 20% of all domestic violence counseling for children in the state.

Our Services. Your Impact.

All of our services are free and confidential thanks to your support.



Emergency Shelter

Confidential shelter for those fleeing abuse.



\$1,000

Shelters a mother and her two children fleeing abuse.



24-Hour Hotline

Multilingual crisis information, safety planning, and community resources.



\$500

Keeps our crisis hotline open 24 hours/day for a week.



Children's Trauma Therapy

6-month evidence-based therapy program for child witnesses of domestic violence.



\$250

Pays for a family to receive creative arts therapy.



Legal advocacy

Information about legal rights and options; assistance navigating the judicial system.



\$50

Provides a victim with court accompaniment.



Support Groups

Weekly meetings in English and Spanish.



\$25

Pays to run a support group.

To support our work, visit:

womenaware.net/donate

or mail a check to:

**250 Livingston Ave
New Brunswick, NJ 08901**

We will send a confirmation of your gift.



women aware

MOVING BEYOND ABUSE

As the lead domestic violence service agency in Middlesex County, we count on your support.

With your help in 2017, we raised over \$100,000 from private donors and over \$2 million from foundation, corporate, and public funding. Volunteers gave over 3,100 hours of their time.

Our Supporters

Thank You.

New Jersey Department of Children and Families, Department of Community Affairs, Department of Justice, Bristol Myers Squibb Foundation, FEMA, HUD, IOLTA, Karma Foundation, Mary Bradof Foundation, Merck Foundation, Middlesex County Freeholders, Office of Violence Against Women, PNC Foundation, Robert Wood Johnson Foundation, TD Bank, United Way of Central Jersey, Verizon Hopeline, and many more generous donors like yourself.

To make an impact, visit: womenaware.net/donate

Financials

We are committed to transparency. Our full financials can be found at:

womenaware.net/about/financials

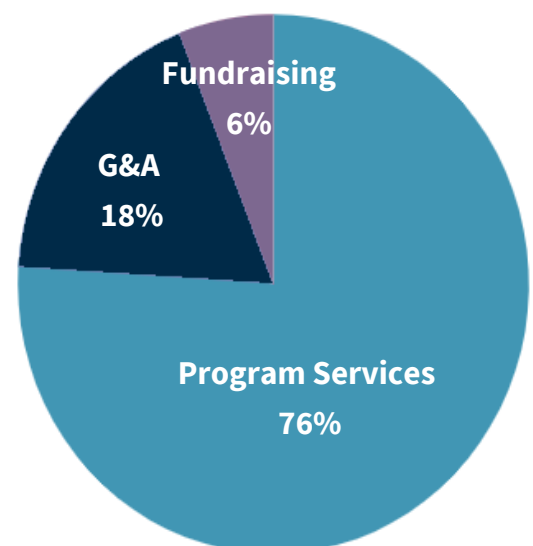
Program Services



General & Administrative



Fundraising



women aware
MOVING BEYOND ABUSE

Board of Directors



Diane Palmer
President



Jessica Oppenheim
Vice President



Matthew Flannery
Treasurer



Patricia Whitehouse
Secretary



Jayshree "Tina" Dave
Member



Lois Kahagi
Member



Ellen Schwartz
Member



Joyce Mizerak
Member



Christine Clayton-Stroh
Member



James J. Hierl
Member



**Teamwork makes
the dream work.**



women aware
MOVING BEYOND ABUSE

HOW TO GET INVOLVED



women aware

MOVING BEYOND ABUSE

1

Run or Walk

Sign up to run or walk our *Moving Beyond Abuse* 5K Race and Charity Walk on 11/11/2018 in Johnson Park, Piscataway, NJ.

bitly.com/movingbeyondabuse



2

Build a Team

Set up a personal fundraiser to make an even bigger impact. All you have to do is go to the link and click 'Join the Team.'

bitly.com/raise4WA



3

Promote

Tell your story on social media and ask people to donate to your fundraiser or to sign up to run/walk with you on 11/11.

facebook.com/womenawareinc



4

Celebrate!

Join us on **Sunday November 11th, 2018 in Johnson Park**. Our Charity Race starts at 10am with music, food, & family fun to follow. Sponsorship opportunities are available:

womenaware.net/donate/sponsor/

